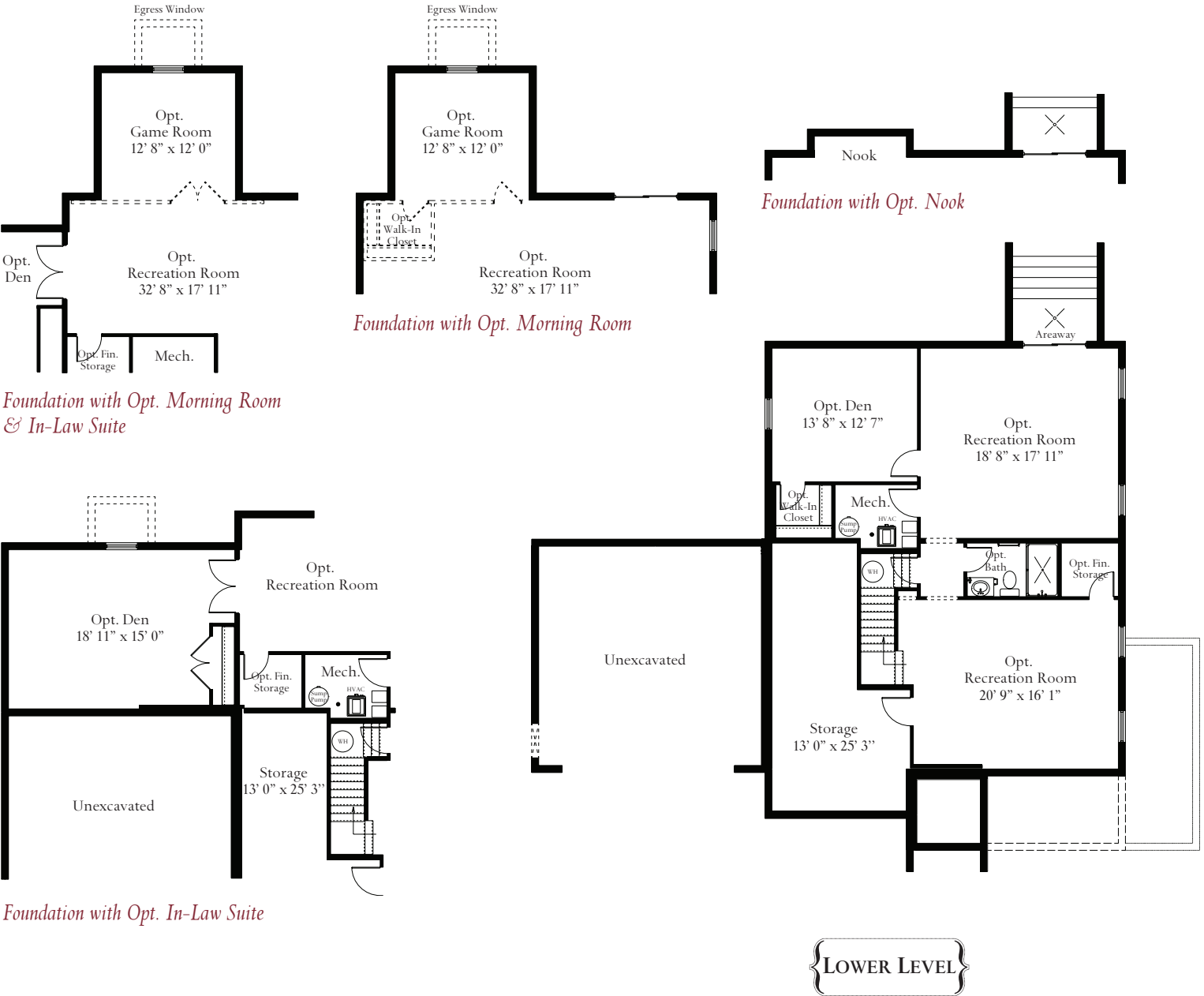


# The Ashland



{ Craftsman }



{ Eastern Seaboard }



{ Farm House with Stone Skirt }

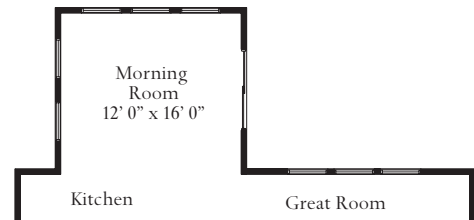


{ Farm House with Partial Stone }

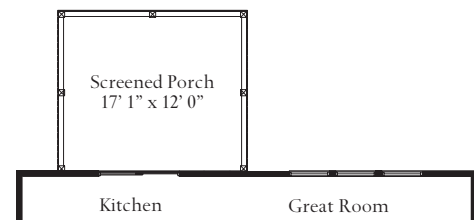
The Ashland provides the conveniences and features that today's families are looking for. This two-story, four bedroom home has an open floor plan that is perfect for entertaining. The first floor offers 9-foot ceilings and a large kitchen with an oversized island and informal dining area. The kitchen opens up into the spacious, light-filled family room – just the spot for family game nights! Busy families will appreciate the large mudroom with access to the private laundry. The second floor offers a private owner's suite with a large walk-in shower, a double vanity, and a substantial walk-in closet. Outside of the owner's suite, the Ashland has three generously sized bedrooms and a large hall bath. An optional first-floor guest suite can be added to accommodate long-term guests or additional family members. An array of optional features such as a screened porch, an extension to the breakfast nook, and a finished recreation room allow you to design this home to fit your unique needs. Starts at 2890 square feet. Please note elevation drawings may show optional features.



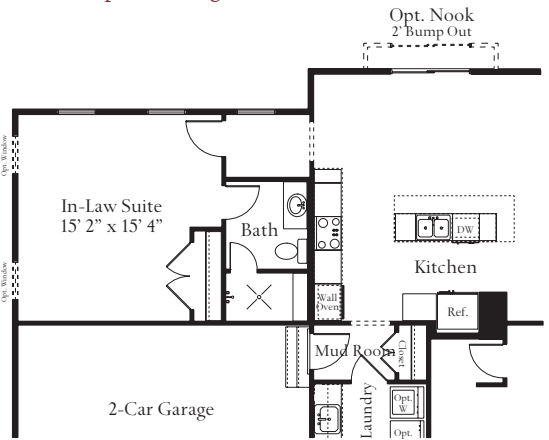
# The Ashland



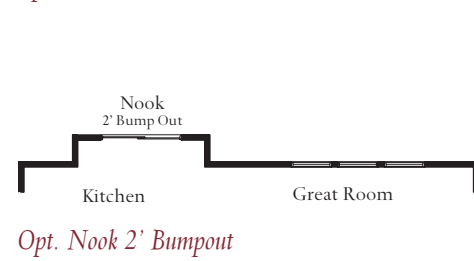
*Opt. Morning Room*



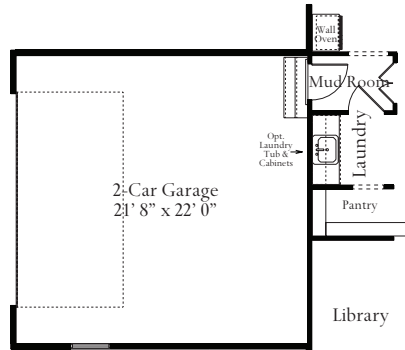
*Opt. Screened Porch*



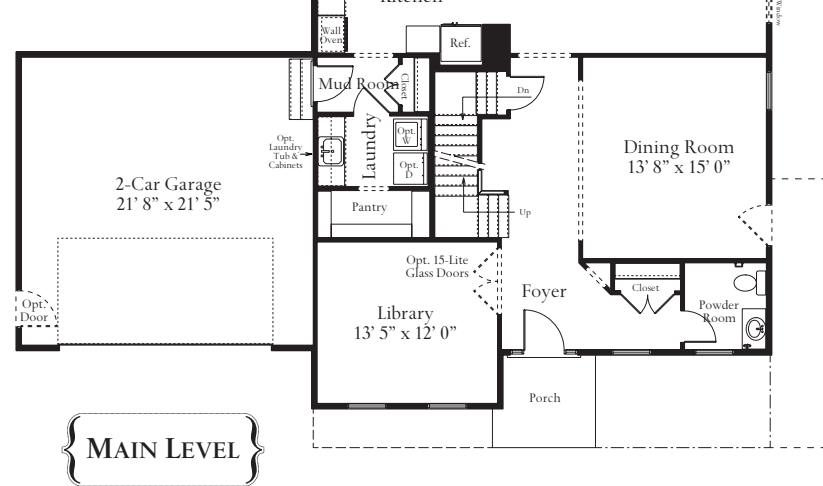
*Opt. In-Law Suite*



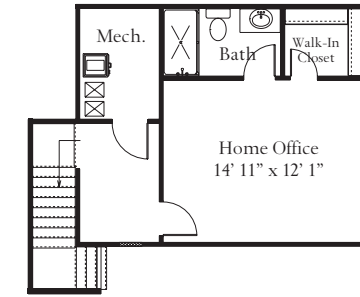
*Opt. Nook 2' Bumpout*



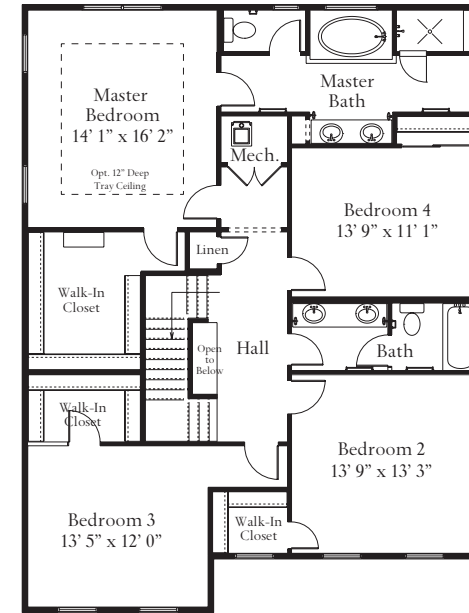
*Opt. 2-Car Side-Load Garage*



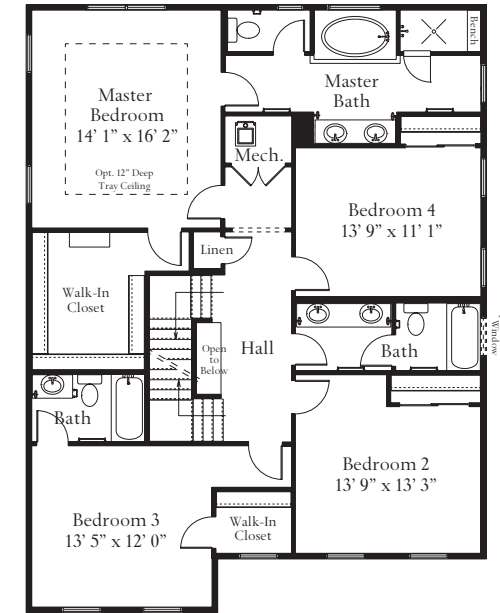
**MAIN LEVEL**



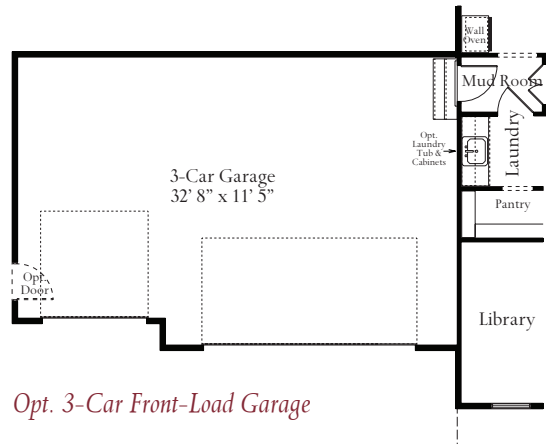
*Third Floor Option*



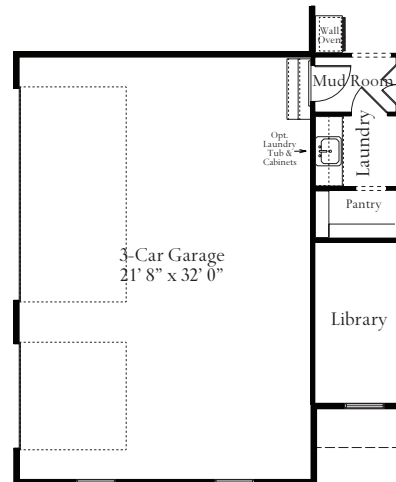
**UPPER LEVEL**



*Alternate Second Floor with Opt. Third Bath*



*Opt. 3-Car Front-Load Garage*



*Opt. 3-Car Side-Load Garage*

*These renderings and floorplans are conceptual only. Actual details may vary. This insert is for illustrative purposes only. Atlantic Builders' continuing research and development program means specifications and plans are subject to change without notice. Standard features vary per community. Please consult Community Sales Manager for details.*